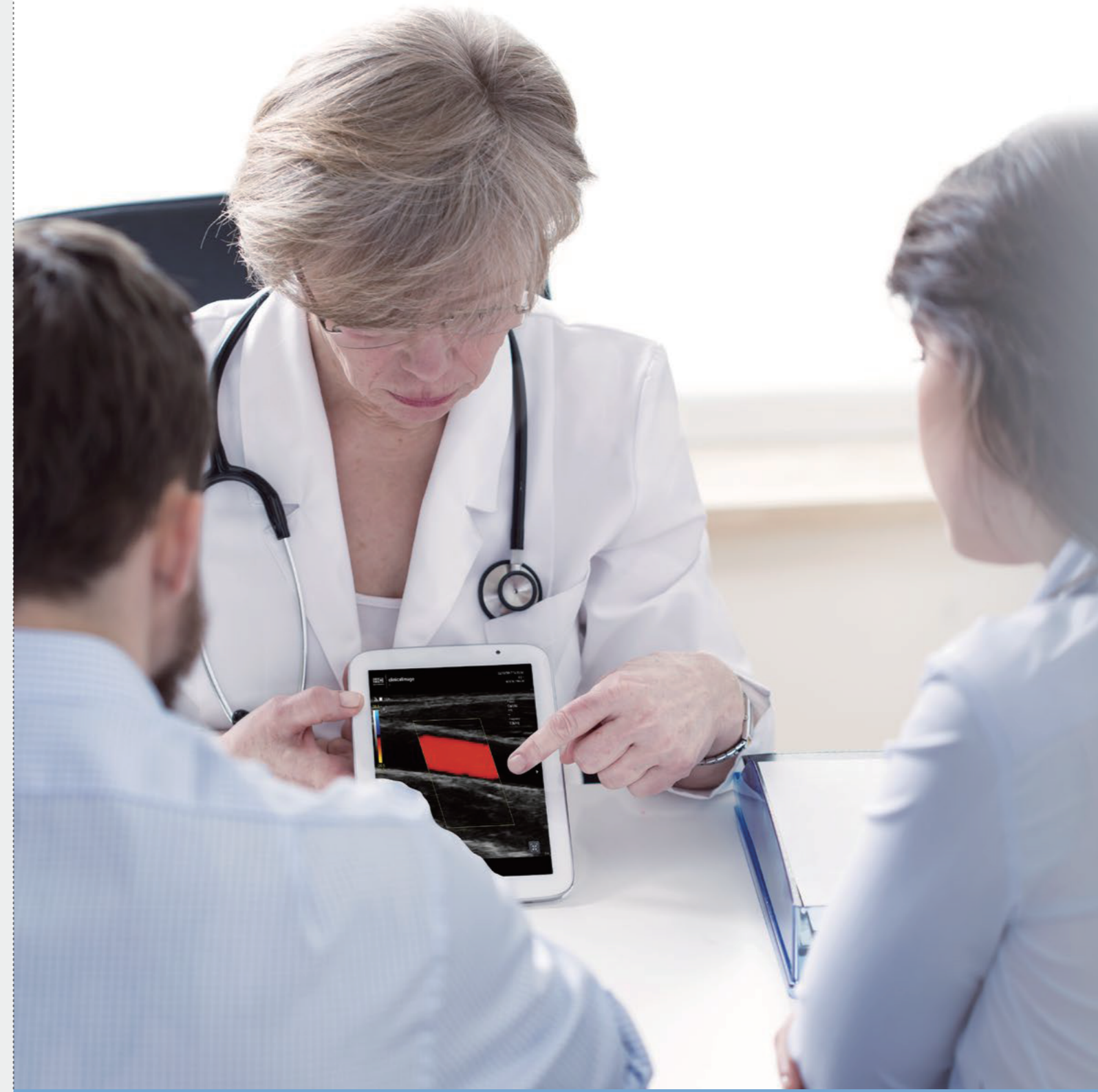
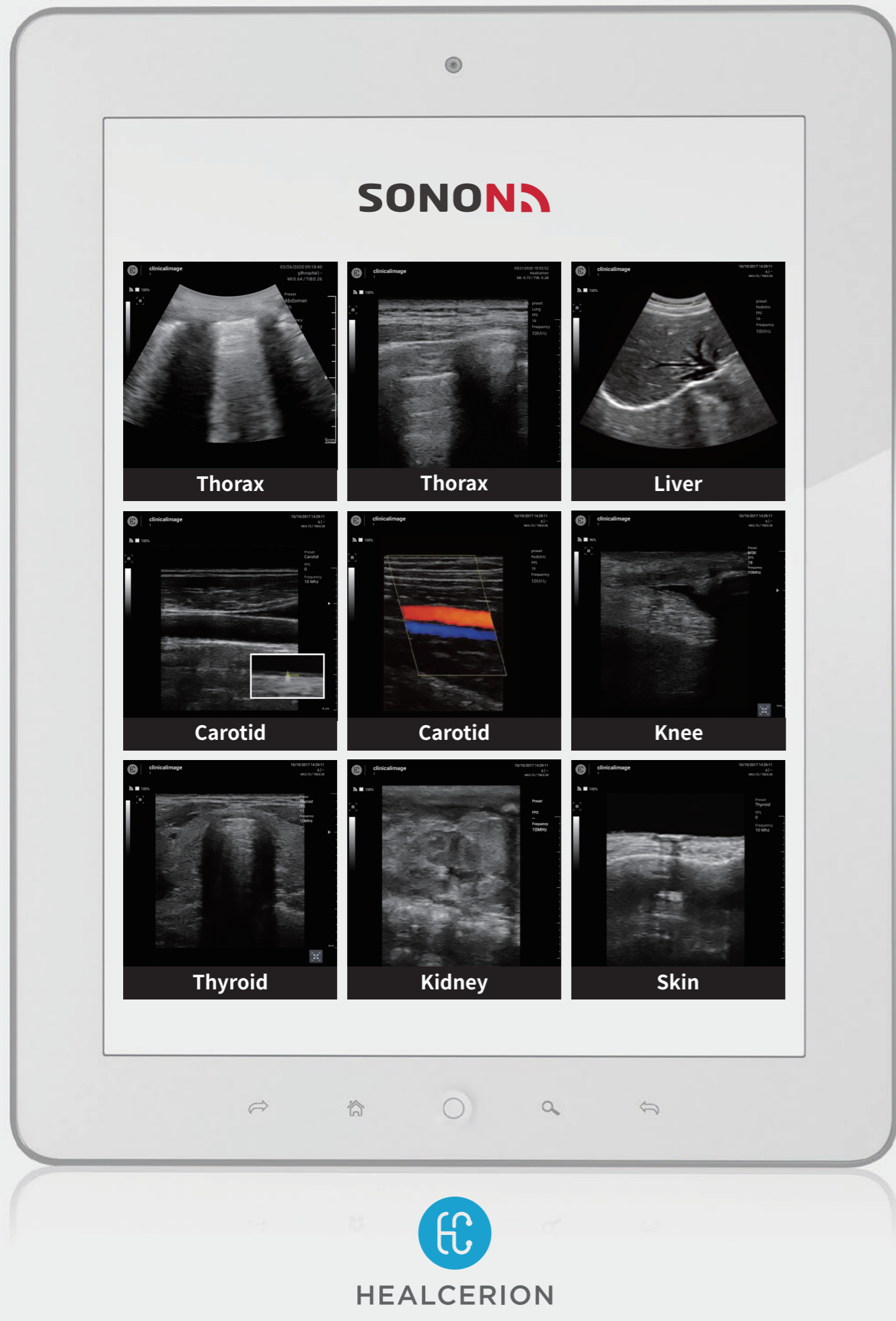


SONON



HC-BC-EN-VER 1.0
Printed in Korea

1401ho, 12, Digital-ro 33-gil, Guro-gu, Seoul, 08377, Korea
www.healcerion.com | Tel: +(82) 70.7582.6326 | E-mail: info@healcerion.com


HEALCERION



Healcerion's Story

Through the use of mobile technology, Healcerion strives to bring affordable, high-quality medical care to clinical and remote locations around the world. Healcerion offers a mobile-based healthcare system that is specifically designed to provide physicians and patients with flexibility and portability. Founded in 2012 by a healthcare provider, Healcerion understands the importance of accurate, timely diagnostic testing results and actionable information. Healcerion is committed to delivering this information to ensure superior patient care and increased satisfaction for both patients and healthcare providers.

Features



Mobility

With our cable-free technology, any urgent situation, including in the emergency room and operating room can easily be accessed while the transducer itself works as a Wi-Fi that makes it possible to perform where there are no internet or stable electric supplies. The light-weight device makes it possible for easy access with simple performance of Wi-Fi features.









User Friendly








In such emergency situations including internal bleedings or fetal checkups, SONON can use any networks, Wi-Fi, 3G, LTE and 5G to share still images (JPEG and DICOM) and video (MPEG4) to other mobile devices between hospitals for assistance.

SONON

SONON 300C Preset

-  Abdomen
-  Bladder
-  FAST
-  Early OB
-  Late OB
-  GYN

SONON 300L Preset

-  Thyroid
-  Carotid
-  Breast
-  MSK
-  Vascular
-  Superficial
-  Thorax

Applications

- MSK
- US guided procedure
- Early Screening
- F.A.S.T.
- Trauma
- Training



Convex **300C**



Linear **300L**

Item	Specification
Convex (300C)	<ul style="list-style-type: none"> • Frequency : 3.5 MHz only • Depth : 5 cm to 20 cm • 390g with Battery • Soft AP / 2.4 GHz
Linear (300L)	<ul style="list-style-type: none"> • Frequency : 5, 7.5 and 10 MHz • Depth : 1 cm to 10 cm • 370g with Battery • Soft AP / 2.4 and 5 GHz
Battery	<ul style="list-style-type: none"> • Type : Rechargeable Li-ion Battery Pack • Charging Time : 3 Hours (Full) • Capacity : 2600 mAh • Using Time : 3 Hours (Scan) 12 Hours (Stand-by)

The minimum requirements for the mobile device are listed in the table below.

Item	Minimum requirements
Target Device	<ul style="list-style-type: none"> • iPhone 6S (2015) or later • iPad Air 2 / iPad Mini 4 or later / iPad Pro • Galaxy S6, Galaxy Note (2015) or later • Galaxy Tab S3 (2017) or later • Surface Pro 3 or later
OS Version	<ul style="list-style-type: none"> • iOS 11.0 or later • Windows 10 10.0.15063.0 or later • Android 5.0 or later